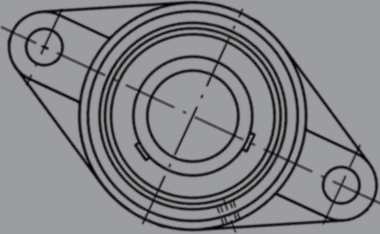
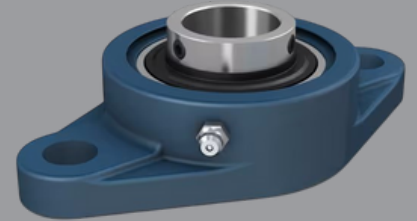


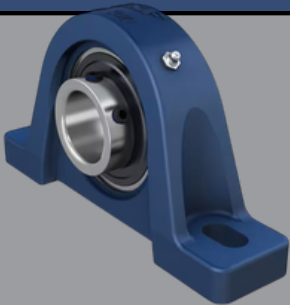
IDENTIFY YOUR BEARING TYPE



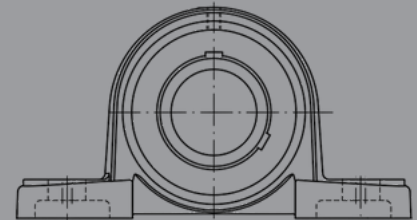
UCFL



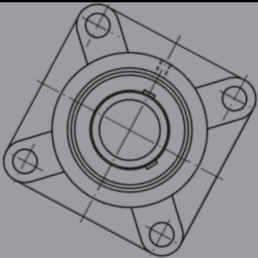
A UCFL Bearing is an oval lemon shape with two bolt holes.



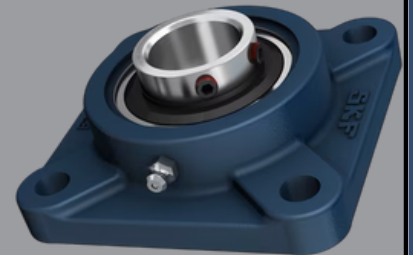
UCF



A UCF Bearing is Pillow block unit with a square base, also with only two bolt holes.

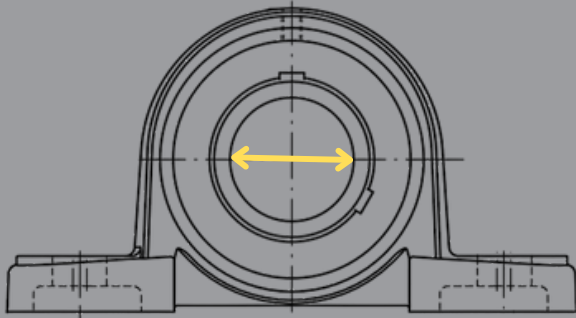


UCP



A UCP Bearing is a square, flange shaped unit with four bolt holes.

HOW TO MEASURE IT?

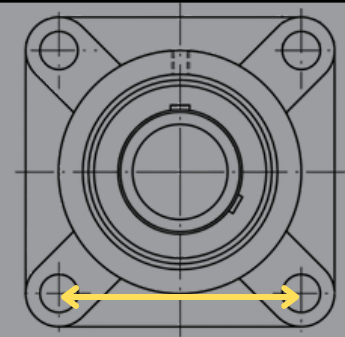


STEP ONE

Measure the internal diameter.

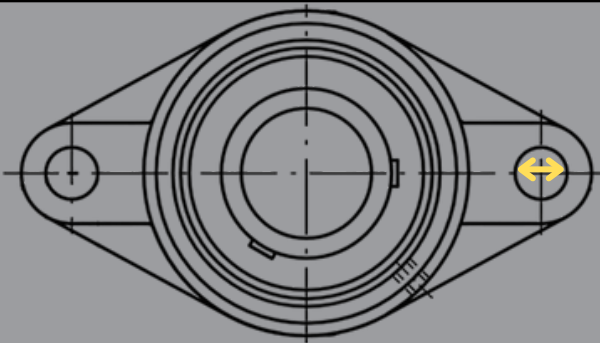
STEP TWO

Measure from the center of one bolt hole to another.



STEP THREE

Measure the diameter of the bolt hole.



STEP FOUR

Cross reference your measurements using our simple to follow table.

